

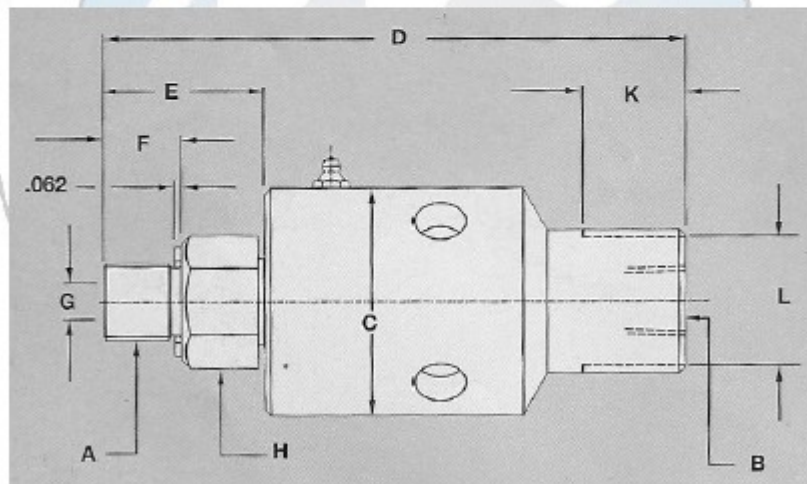
MICRO HIGH PRESSURE/LOW TORQUE WATER UNION



The Micro 557 Model is specifically designed for any applications requiring high pressure high speed and low torque. The low torque is achieved by a combination of large deep groove precision ball bearings and a specially designed low balance ratio Mechanical seal. The finely balanced seal permits a thin film of water to lubricate the seal faces. A combination of stainless steel body, housing and rotor plus tungsten carbide seals resist corrosion and wear from the cleaning solution and provides long trouble free service.

OPERATING DATA

Max. Water Pressure	4000 PSI	276 bar
Max. Temperature	200°F	93°C
Max. Speed	2000 RPM	2,000/min
Max. Flow	4 GPM	15 L/min.



B PORT NPT	ORDERING NUMBER	A ROTOR THREAD	C	D	E	F	G ROTOR HOLE	H ACROSS FLATS	K	L ACROSS FLATS	SHPG. WT.
3/8"	557-160-161	3/4" - 16 UNF RH	2.218"	5.625"	1.562"	.750"	.187"	1.125"	1"	1.250"	3#
3/8"	557-160-162	3/4" - 16 UNF LH	2.218"	5.625"	1.562"	.750"	.187"	1.125"	1"	1.250"	3#